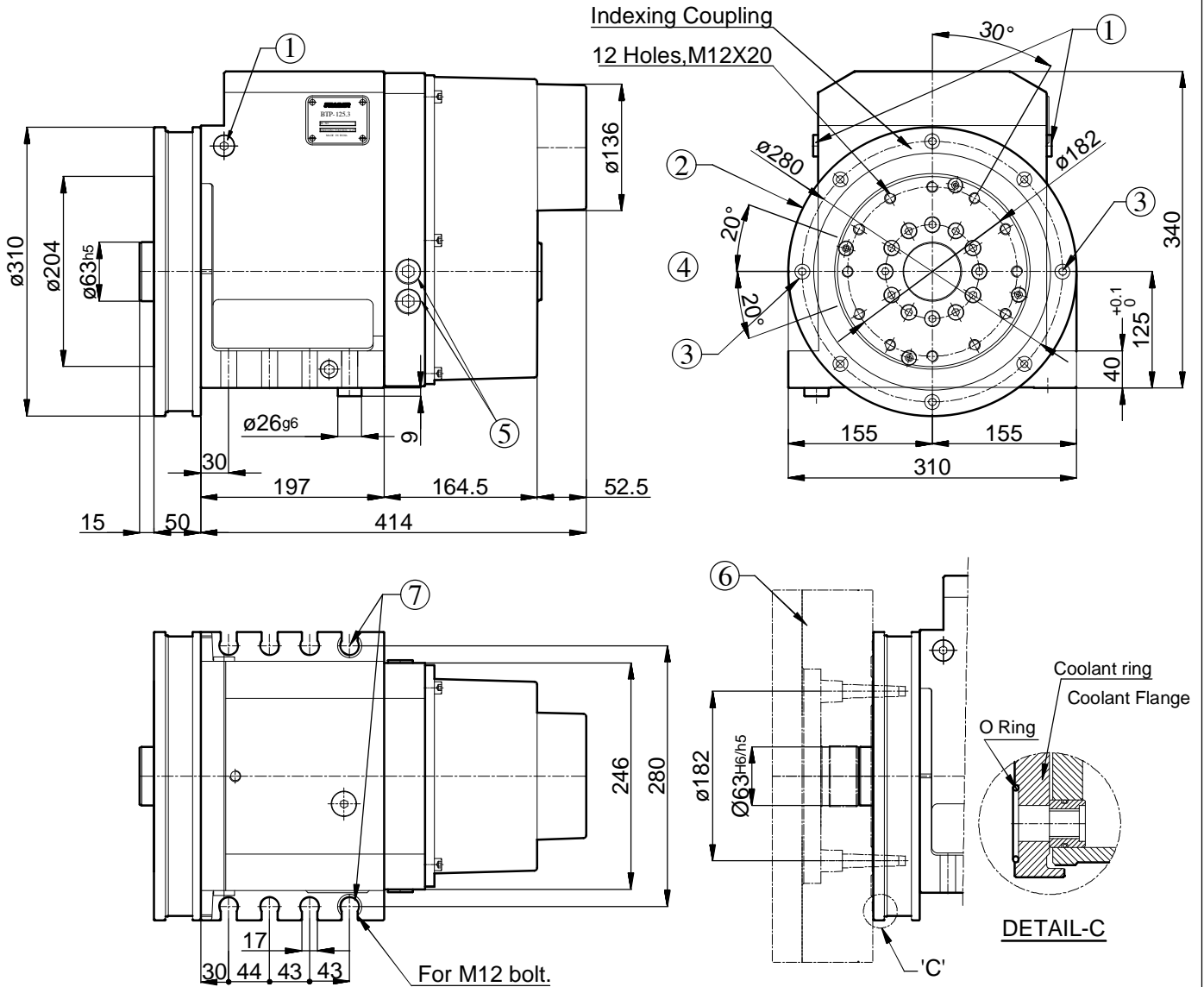


PRODUCT

TOOL TURRET

MODEL

BTP-125.3-8P

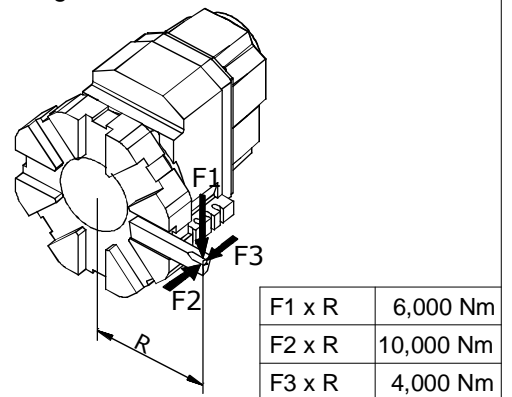


1. Coolant inlet from either side, BSP Thread size 3/8",
2. Coolant flange can be clamped to indexing flange at a suitable angular position depending on the indexing positions,
3. Alternate positions of coolant outlet valve,
4. Adjustment range of coolant outlet valve,
5. Electrical Connection 1/2"BSP,
6. Tool Disc,
7. Turret alignment pin.

Technical Specification.

Inertia of transportable masses		kgm ²	5.0
Indexing time for 8 station.	45°	s	0.70
	90°	s	1.40
	180°	s	2.80
Indexing time for 12 station.	30°	s	0.70
	90°	s	2.10
	180°	s	4.10
Indexing frequency.		min ⁻¹	10
Repeat positioning accuracy.		s	±2
Indexing accuracy.		s	±6
Total weight without Tool disc.		kg	140

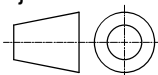
Loading details.



Scale

1:7

Projection



PRAGATI AUTOMATION PVT. LTD.

BANGALORE

Date

10.12.15

Drawing No.

DB44